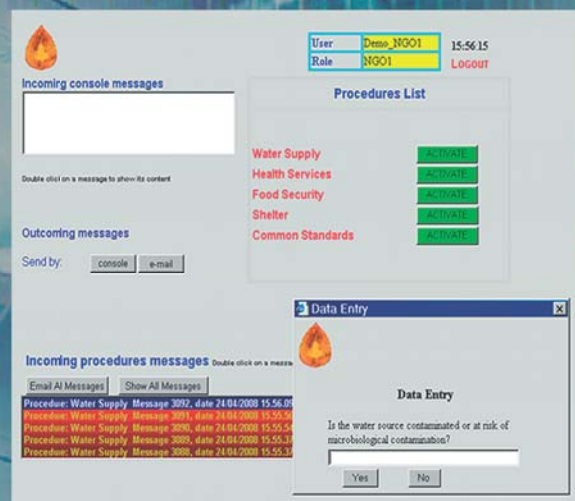


SESM is a research and precompetitive development centre participated by SELEX Sistemi Integrati and Galileo Avionica. SESM operates in the fields of defense, air traffic management and logistics of complex systems, by designing and developing Decision Support and Knowledge Based Systems.

SESM is partner of the European PASR Project **CITRINE: Common Intelligence and Traceability for Rescues and Identification Operations.**

SESM in **CITRINE is leader of WP4 “Knowledge and information fusion for situation understanding, models” and developed **OPAL**, a tool that supports the coordination of activities and allows the correct information flow, suggests the operators what to do, monitors the evolution of the events and reports the decisions and actions taken.**



OPAL works in a client/server architecture which allows the interaction of many users, from different locations and different access level, at the same time and:

- **collects at coordination level information and alerts coming from other modules,**
- **dispatches useful information to all actors involved in the humanitarian crisis management, in each operational phase,**
- **provides procedural guidelines to on-field operators,**
- **produces operational reports.**